

METROLINK® MATTERS NEWS·EVENTS

HOLIDAY EVENTS EDITION

MAJOR CHANGES AT THE SAN BERNARDINO STATION



INSIDE

2 | WORD FROM THE CEO

3 | SANTA FE DEPOT: A RICH
HISTORY & EXCITING
FUTURE

4 | LYFT + METROLINK
MORE REASONS TO RIDE THE
91/PERRIS VALLEY LINE
SAFETY

5 | 2016: THE YEAR IN REVIEW

6 | DISNEY HOLIDAY ON ICE
FESTIVAL OF LIGHTS
HOLIDAY ICE RINK AT PERSHING SQUARE
HOLIDAY SERVICE SCHEDULE
LUNAR NEW YEAR
ONGOING PROMOTIONS



WORD FROM THE CEO

METROLINK IS A SMART INVESTMENT FOR SOUTHERN CALIFORNIA

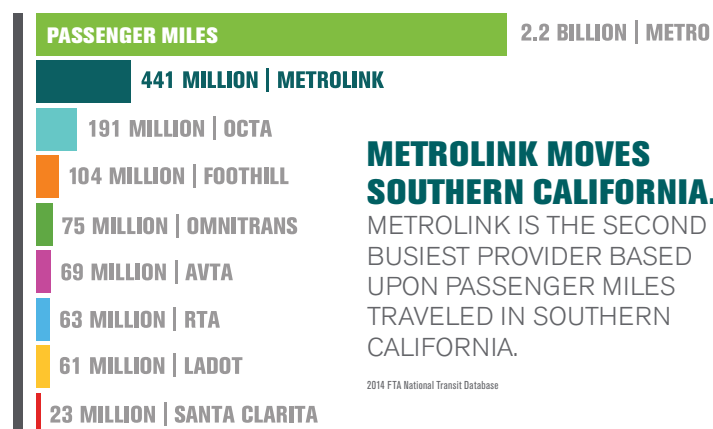
ARTHUR T. LEAHY | CHIEF EXECUTIVE OFFICER | METROLINK

Thank you for taking Metrolink. When you leave your car at home or at the station, there's one less car on the freeway and less pollution in the air. Because 82% of our riders have vehicles, Metrolink reduces traffic and pollution significantly.

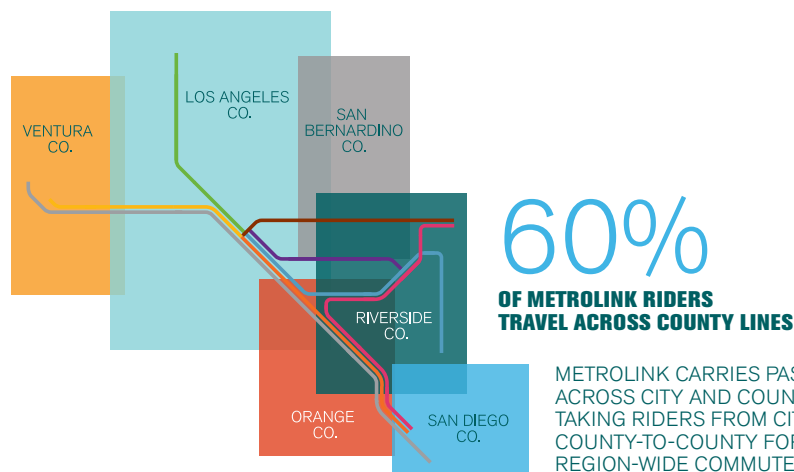
Because Metrolink is the only transportation provider that serves the entire six-county area of Southern California, our riders often have the longest trips. More than 60% of Metrolink riders travel between counties. In fact, Metrolink passengers travel an average of 441 million miles a year, which makes Metrolink the second busiest provider in the region. In the next three issues of Metrolink Matters, I will be presenting how Metrolink riders who choose to take the train are doing their part to reduce congestion and improve air quality in the region.

For more information, please visit metrolinktrains.com/goodinvestment

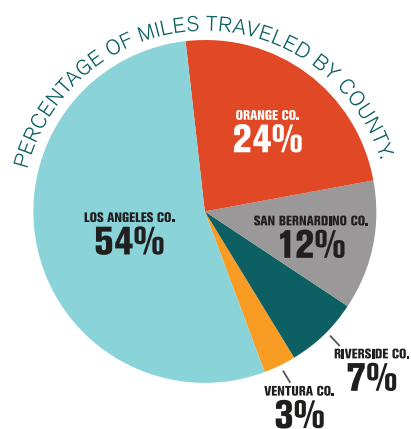
METROLINK SERVES THE ENTIRE SOUTHERN CALIFORNIA REGION



METROLINK RIDERS TRAVEL GREAT DISTANCES



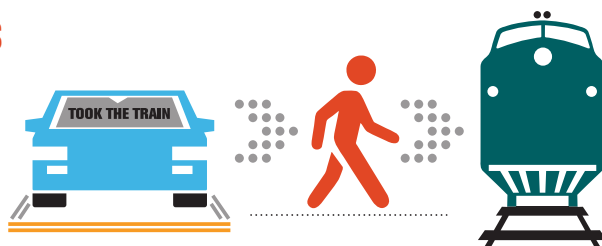
EACH YEAR METROLINK TRAINS TRAVEL
2.7 MILLION MILES



METROLINK TAKES CARS OFF THE FREEWAYS

82%

OF METROLINK RIDERS HAVE AN AUTOMOBILE BUT CHOOSE TO TAKE THE TRAIN, CREATING MORE ROOM ON THE REGION'S FREEWAYS.



THE SANTA FE DEPOT: A RICH HISTORY & EXCITING FUTURE



WHERE WE CAME FROM

The original Santa Fe Depot in San Bernardino was built in 1886 but burned down in 1916. Construction of the existing historic depot was completed in 1918 using fire-resistant materials. This majestic-looking, Mission Revival-style building has been a major landmark for almost 100 years. It is listed on the National Register of Historic Places. It is home to the San Bernardino History and Railroad Museum, as well as several governmental agency offices.

When Metrolink started operations in 1992, it had only three rail lines, including the San Bernardino Line (SBL) that went from Los Angeles Union Station east to Pomona. SBL was later extended further east to San Bernardino, where it became the end of the line for the SBL service. The current SBL is 56.2 miles long and is one of the busiest of Metrolink's seven rail lines. The SBL operates seven days a week, with 38 weekday trains averaging 10,210 riders daily, stopping at 13 stations along the way.

WHERE WE ARE



The depot and rail lines are currently undergoing major construction, remodeling and improvements that will be completed in 2017. San Bernardino Associated Governments, one of Metrolink's five member agencies, is leading the construction efforts at the Depot. Metrolink rail

lines are being realigned and moved north of the existing station tracks and platforms. New double tracks are being added along the north side of the depot and new platforms are being constructed. After this work is completed, the existing station and platforms will be taken out of service and passengers will then board Metrolink trains at the historic Santa Fe Depot, located adjacent to the current Metrolink station.

To provide greater safety for passengers at the new depot platforms, a large pedestrian overpass is being constructed to separate people from arriving and departing trains. It will include elevators to take passengers up to cross over the tracks and down to the other side. There will be a safety fence between the two sets of tracks so people can only cross the tracks at the designated location.



WHERE WE'RE GOING

In 2017, the SBL will be extended one mile east, from the Santa Fe Depot to the new multi-modal San Bernardino Transit Center. Along the one mile of new track, some railroad crossings will be completely closed to street traffic, while others are receiving new safety features, new roadbed and signage.



The San Bernardino Transit Center serves as the hub linking a variety of transportation options, including sbX (bus rapid transit from north San Bernardino to Loma Linda), 13 local Omnitrans bus routes, and regional transit providers serving communities in the mountain region, high desert, east valley, and the low desert, or Morongo Basin. This will allow more residents in outlying communities to access Metrolink easier. In the future, the Redlands Passenger Rail Project, which will extend nine miles east to Redlands, will also connect with Metrolink at the San Bernardino Transit Center.



MORE REASONS TO RIDE

THE 91/PERRIS VALLEY LINE



Metrolink opened its new Perris Valley Line extension in June of 2016. Since then, the ridership has continued to grow as people realized they can save time and money while enjoying a ride on Metrolink.

With new discounts, a more convenient schedule, a shuttle at Downtown Riverside and new retail shops along the line, there are even more reasons to park your car and let Metrolink take you to your destination.

SAVE MONEY! Metrolink has partnered with the Riverside County Transportation Commission to offer a new discount. Starting December 7, riders get 25% off One-Way and Round-Trip Tickets, as well as 7-Day and Monthly Passes when traveling to or from stations on Metrolink's 91/Perris Valley Line extension. Stations on Metrolink's extension include Perris-South, Perris-Downtown, Moreno Valley/March Field, and Riverside-Hunter Park/UCR, for travel to Riverside and beyond.

TAKE THE TRAIN TO WORK! On October 3, Metrolink made major changes to the 91/PVL schedule based on feedback from riders. They wanted to be able to take the train to work before 8 a.m. Metrolink listened and now there are several trains that get riders to and from employment centers on weekdays.



CONNECT TO NEW SHUTTLE SERVICE FREE WITH YOUR METROLINK TICKET! Getting to work has never been easier. Route 54, downtown Riverside's newest shuttle service, was designed with the commuter in mind. The Riverside Transit Agency's Route 54 connects Metrolink's Riverside-Downtown Station with numerous employers

in downtown Riverside. Route 54 runs Monday through Friday with shuttles meeting every Metrolink train. And best of all, it's free with your Metrolink ticket.

ENJOY A CUP O' JOE OR HOT COCOA! Enjoy a cup of fresh-brewed coffee or hot chocolate while you wait for your train or after you arrive at the new **Seattle's Best Coffee®** vending machines, now available at Riverside-Downtown and Corona-North Main stations. Choose from fresh ground, whole bean coffee, decaf, cappuccino, mocha and other flavorful beverages to perk up your day.



Take a sip, take a seat, and *enjoy your ride.*

BE SAFE AND
ENJOY THE RIDE

Safety is always a priority for Metrolink. As it gets darker earlier, it's important to exercise extra caution when commuting. Please keep the following rules and safety tips in mind when traveling by Metrolink:

ARRIVE EARLY. You don't want to run to catch your train, so give yourself an extra few minutes before your scheduled departure time.

USE TECHNOLOGY TO TRACK TRAIN UPDATES. Metrolink uses Twitter and Facebook to provide real time information about service delays and status updates, thus taking the guesswork out of commuting.

BE CAUTIOUS ON THE PLATFORM. Rain, and sometimes even ice and snow can make platforms slippery. Avoid running and always look where you're going to avoid any hazardous situations.

PAY ATTENTION TO ON BOARD ANNOUNCEMENTS. Listen for alerts to upcoming station stops and any changes in service. Make sure you listen for any important information.

HOLD THE HANDRAILS. All passengers should hold the handrails to go up or down the stairs in order to prevent falls, collisions or mishaps with other passengers.

LOOK BOTH WAYS. Use caution when walking through parking lots. Use the marked crosswalk where provided. Park in well-lit areas.

METROLINK+
LYFT=
NO CITY
LIMITS

Connect the stops with Lyft
Get up to \$50 in Lyft ride credit to
use to or from LA Union Station.

use code

METROLINK



DOWNLOAD & RIDE **METROLINK** x **lyft**

Credit available for Lyft rides, up to \$50 per ride, on Lyft platform. Code expires 12/31/2016. See Lyft for restrictions. Riders must be in Los Angeles Union Station. Subject to Lyft terms.

2016

A YEAR IN REVIEW: METROLINK MILESTONES & HIGHLIGHTS



JANUARY

\$3 STATION-TO-STATION FARES

To encourage local travel, Metrolink lowers short distance fares system-wide to as low as \$3 for adults/youth/students and only \$1.50 for senior/disabled/Medicare riders for one-way tickets.



MARCH

METROLINK MOBILE TICKETING APP LAUNCHED

Riders on the go can now purchase tickets and access service alerts, train schedules and ticket information all from their mobile device. Today, almost 25% of tickets are bought on the mobile application.



MAY

FIRST OF 40 NEW TIER 4 LOCOMOTIVES ARRIVE

Metrolink has been upgrading its fleet of locomotives and is the first passenger rail in the nation to operate locomotives with Tier 4 clean technology. The new Tier 4 is powered by stronger engines and equipped with Positive Train Control to improve passenger safety.



JUNE

91/PV LINE OPENS FOR SERVICE

Metrolink was ready to roll with 24 miles of new passenger rail line and four new Metrolink stations. This addition was Metrolink's first expansion in 22 years, and to celebrate, Metrolink offered special grand opening fares to Perris Valley residents.



JULY

100,000 FACEBOOK FANS

Metrolink tops all other public transit agencies in the country by reaching 100,000 Facebook followers. Thank you to everyone in our Facebook community for the support!



SEPTEMBER

ALL ABOARD THE RAMS TRAIN

The Rams have returned to Los Angeles, and Metrolink is offering special service for football fans to and from the Los Angeles Memorial Coliseum. For \$10, riders can purchase a Weekend Day Pass and transfer to Metro Red/Purple subways and Metro Expo light rail for free.



OCTOBER

VINCENT GRADE/ACTON SECOND PLATFORM OPENING

Metrolink hosted a western-themed ribbon-cutting ceremony to unveil a new passenger platform and several station upgrades to the Vincent/Grade Acton station. The historic Santa Fe 3751 also made an appearance at the event as the first steam locomotive to travel north of Los Angeles in 24 years.



NOVEMBER

METROLINK SPONSORS MUZEO EXPRESS

This Christmas season, Muzeo Museum brings you Muzeo Express: Holiday Model Trains, a new annual exhibition featuring themed layouts, California landmarks, a vintage department store window, miniature Metrolink stations and more. This magical holiday exhibit opened in November and will continue through January 8.



WHAT'S COMING UP IN 2017...

On October 26, 2017, Metrolink will celebrate its 25th anniversary. Throughout the year, older Metrolink locomotives will be replaced by new, clean Tier 4 locomotives. The San Bernardino Line and Depot will also see major changes in 2017 (see page 3), and construction is already underway for a number of rehabilitation projects expected to enhance safety and reliability for Metrolink service.

DESTINATIONS & EVENTS



Metrolink will operate normal Saturday service on Saturday, Dec. 24 and normal Sunday Service on Sunday, Dec. 25. On Monday, Dec. 26, Metrolink will operate special Sunday service on the San Bernardino and Antelope Valley Lines only. No other lines will operate.

To allow riders to attend the 2017 Tournament of Roses Parade® in Pasadena on Monday, Jan. 2, the first train on Metrolink's San Bernardino Line will depart San Bernardino at 6:10 a.m. making all station stops and arriving at L.A. Union Station at 7:45 a.m. On the Antelope Valley Line, the first train will depart Lancaster at 5:40 a.m. and arrive at L.A. Union Station at 7:40 a.m. From L.A. Union Station, passengers can transfer at no additional charge to the Metro Gold Line and get off at the Del Mar, Memorial Park, Lake, or Allen stations. The parade route is just a short walk from the stations. For more information, visit metrolinktrains.com/schedules.

SPECIAL METROLINK SERVICE TO THE FESTIVAL OF LIGHTS

The AAA Four Diamond, Historic Mission Inn Hotel & Spa pays homage to the holidays with its annual, Festival of Lights. Now in its 24th year, The Mission Inn's Festival of Lights is an annual gift to the community from owners Duane & Kelly Roberts who began this beloved tradition in 1992.



Enjoy more than 4.5 million dazzling holiday lights, over 400 animated figures, Dickens carolers, appearances by Santa Claus, the world's largest man-made mistletoe measuring 12' x 8', horse-drawn carriage rides, freshly fallen snow, an elaborately decorated Christmas tree in the hotel lobby and delectable holiday confections at the original famous Casey's Cupcakes® located at The Inn.

Metrolink will operate special service to the festival on the 91/Perris Valley Line on Nov. 25-26 and Dec. 2, 3, 9, 10, 16 and 17. Tickets to board the trains cost \$7 for adults, and children under age 18 ride free. For details, visit metrolinktrains.com/fol.

ONGOING PROMOTIONS

- **RAMS TRAINS** special service ends Jan. 1. Buy a Metrolink round-trip ticket for \$10.
- **THE SCIENCE BEHIND PIXAR** exhibit closes April 9. Save on admission with promo code "INSPIRE".

For more information, please visit metrolinktrains.com/destinationsandevents.

CALENDAR OF SOUTHERN CALIFORNIA EVENTS AND DESTINATIONS TO REACH VIA METROLINK

For more events and destinations, go to: metrolinktrains.com/destinationsandevents

METROLINK RIDERS SAVE \$10 OFF SELECT DISNEY ON ICE SHOWS



Rev up for non-stop fun with four favorite Disney stories at Disney On Ice presents Worlds of Enchantment! See the Disney•Pixar Cars race across the ice; dive into fun with The Little Mermaid; join the adventures of Buzz, Woody and the Disney•Pixar Toy Story gang; and journey with Anna, Elsa and Olaf of Disney's Frozen to discover true love!

Performances will be at STAPLES Center (Dec 16-18), Honda Center (Dec 22-24), Long Beach Arena (Dec 29-Jan 1) and Citizens Business Bank Arena (Jan 5-8). SAVE \$10 on select price levels with code word "TRAIN". For more information on the show dates, visit metrolinktrains.com/DisneyOnIce.

HOLIDAY ICE RINK PERSHING SQUARE ENDS JANUARY 16

The iconic Holiday Ice Rink® Pershing Square takes you to a magical winter wonderland in the heart of historic Downtown Los Angeles. This season's roster of free community and special events includes the Ice Breaker: Opening Celebration, the popular DJ Spotlight Series, Polar Bear Skate, Learn to Curl and its first-ever Silent Night Skate Party. General admission is \$9, and riders with a valid Metrolink ticket save \$1 off. For more information, visit metrolinktrains.com/holidayevents.

RIDE INTO THE LUNAR NEW YEAR WITH METROLINK



Celebrate the Year of the Rooster with Metrolink and take the train to Chinatown for the Golden Dragon Parade on Saturday, February 4. With elaborately decorated floats, marching bands and

cultural performances by some of the nation's best Chinese acts, this free event is fun for all ages. In celebration of Lunar New Year, Metrolink is giving away 1,000 limited edition paper trains at L.A. Union Station. Use the \$10 Weekend Day Pass to ride into Los Angeles Union Station and transfer to Metro's Gold Line. For more exciting details, visit metrolinktrains.com/lunarnewyear.