

DISCLAIMER

SCRRA Engineering Standards are intended for SCRRA approved uses only. FOR NON-SCRRA APPROVED USES: SCRRA and its member agencies, directors, officers, employees and/or agents shall not be responsible for the accuracy or completeness of the data or information contained herein. The selection and use of these standards, while designed in accordance with generally accepted engineering principles and practices, is the sole responsibility of the user and should not be used without consulting a registered professional engineer. All warranties and representations of any kind are disclaimed. Anyone making use of this information agrees that it assumes all liability arising from such use. No part of these standards should be reproduced or distributed in any form or by any means without the prior written permission of SCRRA. All rights reserved.

Since revisions or additions to the engineering standards may occur at any time, the user agrees to indemnify, defend, by counsel satisfactory to SCRRA and Member Agency, and hold harmless SCRRA, Member Agencies, and Operating Railroad, and their respective officers, commissioners, employees, agents, successors and assigns. ("Indemnitees"), and each of them to the maximum extent allowed by law, from and against all loss, liability, claims, demands, suits, liens, claims of lien, damages (including incidental consequential damages), costs and expenses (including, without limitation, any fines, penalties, judgments, actual litigation expenses and experts' and actual attorneys' fees), that are incurred by or asserted against Indemnitees arising out of or connected in any manner with the user's use of outdated engineering standards.

Updating the contents of the manual is a continued process, and revisions/replacements are issued periodically. Questions, comments, and proposed recommendations for changes may be sent to SCRRA at 279 E. Arrow Highway, Suite A, San Dimas, CA 91773.

STATION COMMUNICATIONS


SIGNALS

TRAIN CONTROL COMMUNICATION

CITIES AND COUNTIES

AGENCIES, ORGANIZATIONS AND CODES

ACS	ADVANCED COMMUNICATION SYSTEM	PA	PUBLIC ADDRESS	AK	APPROACH TRACK INDICATION	AMPL	AMPLIFIER	CATH	CITY OF ATHERTON	AASHTO	AMERICAN ASSOCIATION OF STATE HIGH-WAY AND TRANSPORTATION OFFICIALS
BER	BIT-ERROR RATE	PAS	PUBLIC ADDRESS SYSTEM	DAX	DOWNSTREAM ADJACENT CROSSING	ATCS	ADVANCE TRAIN CONTROL SYSTEM	CBEL	CITY OF BELMONT	AAR	ASSOCIATION OF AMERICAN RAILROADS
CC	COMMUNICATIONS CABINET	PDA	PERSONAL DIGITAL ASSISTANT	EMS	EMERGENCY ALARM CONTROL CIRCUITS	BER	BIT ERROR RATE	CBUR	CITY OF BURLINGAME	ACI	AMERICAN CONCRETE INSTITUTE
CCF	CENTRAL CONTROL FACILITY	PDU	POWER DISTRIBUTION UNIT	FLT	SIGNAL FLEETING	BPF	BAND PASS FILTER	CGIL	CITY OF GILROY	ADA	AMERICANS WITH DISABILITIES ACT
CCTV	CLOSED CIRCUIT TELEVISION-VIDEO SECURITY	PLC	PROGRAMMABLE LOGIC CONTROLLER	FR	FLASHER RELAY	BS	BASE STATION	CMIL	CITY OF MILLBRAE	AMTRAK	NATIONAL RAILROAD PASSENGER CORPORATION
CER	COMMUNICATIONS EQUIPMENT ROOM	PTB	PROTECTED TERMINAL BLOCKS	GCR	GATE CONTROL RELAY	CCF	CENTRAL CONTROL FACILITY	CMV	CITY OF MOUNTAIN VIEW	ANSI	AMERICAN NATIONAL STANDARDS INSTITUTE
CIC	COMMUNICATIONS INTERFACE CABINETS	PTT	PUSH TO TALK	GD	GATE DOWN	CRC	CYCLIC REDUNDANCY CHECKS	CPA	CITY OF PALO ALTO	APWA	AMERICAN PUBLIC WORKS ASSOCIATION
CID	CARD INTERFACE DEVICE	PVC	PRIVATE VIRTUAL CIRCUIT	GE	GREEN SIGNAL LAMP	CSU	CHANNEL SERVICE UNIT	CRWC	CITY OF REDWOOD CITY	AREA	AMERICAN RAILWAY ENGINEERING ASSOCIATION
CSMH	COMMUNICATIONS SYSTEM MANHOLE	QOS	QUALITY OF SERVICE	GPR	GATE REPEATER RELAY (GATE IN UP POSITION)	CTC	CENTRALIZED TRAIN CONTROL	CSB	CITY OF SAN BRUNO	AREMA	AMERICAN RAILWAY ENGINEERING AND MAINTENANCE OF WAY ASSOCIATION
CST	COMBINED SYSTEM TRUNK	RPR	RESILIENT PACKET RING	NGS	NORTHWARD SIGNAL REQUEST	CTCSS	CONTINUOUS-TONE-CODED SQUELCH SYSTEM	CSC	CITY OF SAN CARLOS	ASTM	AMERICAN SOCIETY FOR TESTING AND MATERIALS
DC	DISTRIBUTION CABINET	RTU	REMOTE TERMINAL UNIT (COMMUNICATIONS)	NGK	NORTHWARD SIGNAL CLEAR INDICATION	dB	DECIBEL	CSJ	CITY OF SAN JOSE	ATT	ATLANTIC TELEPHONE AND TELEGRAPH COMPANY
DDS	DEDICATED DIGITAL SERVICE	SCC	STATION COMMUNICATION CABINET	NJSP	DUAL SELECTOR LEVER	dBm	DECIBEL REFERENCED TO A MILLIWATT	CSM	CITY OF SAN MATEO	AWS	AMERICAN WIRE GAUGE
DSO	SINGLE DATA CHANNEL OF 56-65 Kbps	SFX	SMALL FORM (PLUGGABLE) CROSS-CONNECT	NWK	NORMAL SWITCH INDICATION	dBW	DECIBEL REFERENCED TO A WATT	COSM	COUNTY OF SAN MATEO	BART	BAY AREA RAPID TRANSIT (DISTRICT)
E&M	EAR AND MOUTH	SLA	SERVICE LEVEL AGREEMENT	NWP	NORMAL SWITCH POINT POSITION	DBU	DIAL BACKUP	COSCL	COUNTY OF SANTA CLARA	BNSF	BURLINGTON NORTHERN SANTA FE
E-LAN	ETHERNET LAN	SM	SINGLE MODE	NWR	NORMAL SWITCH CONTROL RELAY	DED	DRAGGING EQUIPMENT DETECTOR	CSV	CITY OF SUNNYVALE	CALCAS	CALIFORNIA ACCESS COMPLIANCE SOURCE
EOS	ETHERNET OVER SONET	SNMP	SIMPLE NETWORK MANAGEMENT PROTOCOL	NWS	NORMAL SWITCH REQUEST	DSU	DATA SERVICE UNIT			CALDAG	CALIFORNIA DISABLED ACCESSIBILITY GUIDEBOOK
EPL	ETHERNET PRIVATE LINE	SPDU	SYNCHRONOUS OPTICAL NETWORK SWITCHED POWER DISTRIBUTION UNIT	RE	RED SIGNAL LAMP	ERP	EFFECTIVE RADIATED POWER			CALTRANS	CALIFORNIA DEPARTMENT OF TRANSPORTATION
EVC	ETHERNET VIRTUAL CIRCUIT	TIC	SINGLE DATA CHANNEL OF 1.544 Mbps	RWK	REVERSE SWITCH INDICATION	FAT	FACTORY ACCEPTANCE TEST			CCR	CALIFORNIA CODE OF REGULATIONS
EVPL	ETHERNET VIRTUAL PRIVATE LINE	TIMUX	A MULTIPLEXING DEVICE BY WHICH A SINGLE T1 CHANNEL IS UTILIZED TO PROVIDE DSO CHANNELS	RWP	REVERSE SWITCH POINT POSITION	FDP	FIBER DISTRIBUTION PANEL			CEC	CALIFORNIA ELECTRICAL CODE
EVPLAN	ETHERNET VIRTUAL PRIVATE LAN	TDM	TIME DIVISION MULTIPLEXING	RWR	REVERSE SWITCH CONTROL RELAY	FEC	FORWARD ERROR CONNECTION			CPUC	CALIFORNIA PUBLIC UTILITIES COMMISSION
FDP	FIBER DISTRIBUTION PANEL	UP-LINK	1000 MBPS SWITCH EXPANSION PORTS	RWS	REVERSE SWITCH REQUEST	FM	FREQUENCY MODULATION			EIA	ELECTRONICS INDUSTRIES ALLIANCE
FO	FIBER OPTIC	UPS	UNINTERRUPTIBLE POWER SUPPLY	SGHS	SOUTHWARD SIGNAL REQUEST	FO	FIBER OPTIC			FAA	FEDERAL AVIATION ADMINISTRATION
FOC	FIBER OPTIC CABLE	UPSR	UNIDIRECTIONAL PATH SWITCH RING	SGK	SOUTHWARD SIGNAL CLEAR INDICATION	FPP	FIBER PATCH PANEL			FCC	FEDERAL COMMUNICATIONS COMMISSION
FPS	FRAME PER SECOND	UTP	UNSHIELDED TWISTED PAIR	TEK	SIGNAL IN TIME INDICATION	FR	FRAME RELAY			FRA	FEDERAL RAILROAD ADMINISTRATION
FSE	FIBER SLACK ENCLOSURE	VCAT	VIRTUAL CONCATENATION	TK	OS TRACK INDICATION	GMSK	GAUSSIAN MINIMUM SHIFT KEYING			JPB	(PENINSULA CORRIDOR) JOINT POWERS BOARD
GBIC	GIGABIT INTERFACE CONVERTER	VLAN	VIRTUAL LOCAL AREA NETWORK	TOB	TON PER OPERATIVE BRAKE	GPS	GLOBAL POSITIONING SYSTEM			MUTCD	MANUAL ON UNIFORM TRAFFIC CONTROL DEVICES
GBPS	GIGABITS PER SECOND	VPN	VIRTUAL PRIVATE NETWORK	UAX	UPSTREAM ADJACENT CROSSING	ISDN	INTERGRATED SERVICES DIGITAL NETWORK			NEC	NATIONAL ELECTRICAL CODE
GRP	GLASS REINFORCED PLASTIC ROD	WA	WORK AREA	WBC	SWITCH CONTROL RELAY BACK CHECK	KO	KEYBOARD OPERATOR			NEMA	NATIONAL ELECTRICAL MANUFACTURERS ASSOCIATION
GRS	GALVANIZED RIGID STEEL	WAN	WIDE AREA NETWORK	WCM	WAYSIDE COMMUNICATIONS MANAGER	KVM	KEYBOARD VIDEO MOUSE			NFPA	NATIONAL FIRE PROTECTION ASSOCIATION
GUI	GRAPHICAL USER INTERFACE	WAP	WIRELESS APPLICATION PROTOCOL	XR	CROSSING CONTROL RELAY	MAS	MULTIPLE ADDRESSING SCHEME			PCJPB	PENINSULA CORRIDOR JOINT POWERS BOARD
IP	INTERNET PROTOCOL	WCM	WAYSIDE COMMUNICATIONS MANAGER	YE	YELLOW SIGNAL LAMP	MC	MEDIA CONVERTER			PCMCIA	PERSONAL COMPUTER MEMORY CARD INTERNATIONAL ASSOCIATION
Kbps	KILO BITS PER SECOND					MDF	MAIN DISTRIBUTION FRAME			PG&E	PACIFIC GAS AND ELECTRIC
LAN	LOCAL AREA NETWORK					NIC	NETWORK INTERFACE CARD			SAMTRANS	SAN MATEO COUNTY TRANSIT DISTRICT
LCD	LIQUID CRYSTAL DISPLAY					NMS	NETWORK MANAGEMENT SYSTEM			SBC	SOUTHERN BELL COMPANY
LDF	LOCAL DISTRIBUTION FRAME					RF	RADIO FREQUENCY			SCRRA	SOUTH CALIFORNIA REGIONAL RAIL AUTHORITY (METROLINK)
LID	LOCAL INJECTION AND DETECTION (FUSION SPLICING)					RX	RECEIVE			SCVTA	SANTA CLARA VALLEY TRANSPORTATION AUTHORITY
LPM	LOCAL PAGING MICROPHONE					SVR	SERVER			SMCTA	SAN MATEO COUNTY TRANSPORTATION AUTHORITY
Mbps	MEGA BITS PER SECOND					TC/C	TRAIN CONTROLS AND COMMUNICATION			SPR	SPRINT NEXTEL
MDF	MAIN DISTRIBUTION FRAME					TCT	TRAIN CONTROL TRENCH			SPTC	SOUTHERN PACIFIC TRANSPORTATION COMPANY
MDPE	MEDIUM DENSITY POLYETHYLENE (CABLE SHEATH)					TX	TRANSMITTER			SVP	SILICON VALLEY POWER
MEF	METRO ETHERNET FORUM					UHF	ULTRA HIGH FREQUENCY			TIA	TELECOMMUNICATIONS INDUSTRY ASSOC
MM	MULTI-MODE					VHF	VERY HIGH FREQUENCY			UBC	UNIFORM BUILDING CODE
MMFOC	MULTI-MODE FIBER OPTIC CABLE					VHLC	VITAL HARMON LOGIC CONTROLLER			UL	UNDERWRITERS LABORATORIES
MOPE	MAIN POINT OF ENTRY									UPC	UNIFORM PLUMBING CODE
MS	MILLISECOND									UPRR	UNION PACIFIC RAILROAD
MSPP	MULTI-SERVICE PROVISIONING PLATFORM										
NID	NETWORK INTERFACE DEVICE										
NMS	NETWORK MANAGEMENT SYSTEM										
NTP	NETWORK TIME PROTOCOL										
NVR	NETWORK VIDEO RECORDER										
OCC	OPERATION CONTROL CENTER										
OSP	OUTSIDE PLANT										

DRAWN BY: A. CARLOS		DATE: 03/31/2011		SCRR ENGINEERING STANDARDS ARE INTENDED FOR SCRR APPROVED USES ONLY. FOR NON-SCRR APPROVED USES, SCRR SHALL NOT BE RESPONSIBLE FOR THE ACCURACY OR COMPLETENESS OF THE DATA OR INFORMATION CONTAINED HEREIN. THE SELECTION AND USE OF THESE STANDARDS IS THE SOLE RESPONSIBILITY OF THE USER AND SHOULD NOT BE USED WITHOUT CONSULTING A REGISTERED PROFESSIONAL ENGINEER. ALL WARRANTIES AND REPRESENTATIONS OF ANY KIND ARE DISCLAIMED. ANYONE MAKING USE OF THIS INFORMATION AGREES THAT IT ASSUMES ALL LIABILITY ARISING FROM SUCH USE. NO PART OF THESE STANDARDS SHOULD BE REPRODUCED OR DISTRIBUTED IN ANY FORM OR BY ANY MEANS WITHOUT THE PRIOR WRITTEN PERMISSION OF SCRR. ALL RIGHTS RESERVED.				ENGINEERING STANDARDS		STANDARD 1102
ASSISTANT DIRECTOR: STANDARDS & DESIGN <i>Nareh D. Pappas</i>				SOUTHERN CALIFORNIA REGIONAL RAIL AUTHORITY ONE GATEWAY PLAZA, 12TH FLOOR, L. A., CA. 90012				GENERAL ABBREVIATIONS SIGNAL, COMMUNICATIONS AND STATION COMMUNICATIONS		SCALE: NTS
REVISION XX XX		DES. ENG.		DIRECTOR OF ENGINEERING AND CONSTRUCTION <i>William D. Davis</i>				REVISION SHEET - 1 OF 1		CADD FILE: ES1102

ARCHITECTURAL

ACOUS ACOUSTICAL
ALUM ALUMINUM
AFF ABOVE FINISHED FLOOR

BD BOARD
BITUM BITUMINOUS
BLKG BLOCKING
BM BEAM

CAB CABINET
CER CERAMIC
CI CAST IRON
CIP CAST IRON PIPE
CLG CEILING
CLKG CAULKING
CORR CORRIDOR
CT CERAMIC TILE
CTSK COUNTERSUNK

DF DRINKING FOUNTAIN
DISP DISPENSER
DO DOOR OPENING
DR DOOR
DS DOWNSPOUT
DSP DRY STANDPIPE

ENCL ENCLOSURE
ESCL ESCALATOR
EXPD EXPOSED
ESEW EMERGENCY SHOWER/
EYE WASH

FA FIRE ALARM
FACP FIRE ALARM CONTROL PANEL
FCO FLOOR CLEAN OUT
FD FLOOR DRAIN
FDC FIRE DEPARTMENT
CONNECTION
FDP FIRE DAMPER
FE FIRE EXTINGUISHER
FH FIRE HYDRANT
FHC FIRE HOSE CABINET
FLR FLOOR
FLUOR FLUORESCENT
FOF FACE OF FINISH
FOS FACE OF STUDS
FPRF FIREPROOF
FSK FLOOR SINK
FUR FURRING

GL GLASS
GYP GYPSUM
GYPBD GYPSUM BOARD

HDWE HARDWARE
HM HOLLOW METAL

INCAND INCANDESCENT

JAN JANITOR

LAM LAMINATE
LAV LAVATORY
LKR LOCKER

MO MASONRY OPENING
MSK MOP SINK
MTD MOUNTED
MUL MULLION

OFD OVERFLOW DRAIN

PC PRECAST CONCRETE
PCC PORTLAND CEMENT CONCRETE
PLAM PLASTIC LAMINATE
PLAS PLASTER
PLYWD PLYWOOD
PTD PAPER TOWEL DISPENSER

RB RESILIENT BASE
RD ROOF DRAIN
RESIL RESILIENT
RM ROOM
RWL RAIN WATER LEADER

SC SOLID CORE
SCD SEAT COVER DISPENSER
SD SMOKE DETECTOR
SDT STATIC DISSIPATE TILE FLOOR
SND SANITARY NAPKIN DISPENSER
SNR SANITARY NAPKIN RECEPTACLE
SPKR SPEAKER
SSK SERVICE SINK
STOR STORAGE
SUSP SUSPENDED

TPD TOILET PAPER DISPENSER

UNF UNFINISHED
UR URINAL

VCT VINYL COMPOSITION TILE
VEST VESTIBULE

WC WATER CLOSET
WD WOOD
WSP WET STAND PIPE

GLASS
GYPSUM
GYPSUM BOARD

HARDWARE
HOLLOW METAL

INCANDESCENT

JANITOR

LAMINATE
LAVATORY
LOCKER

MASONRY OPENING
MOP SINK
MOUNTED
MULLION

OVERFLOW DRAIN

ELECTRICAL

AC ALTERNATING CURRENT
AF AMPERE FUSE
AFR AMPERE FRAME
AGC AUTOMATIC GAIN CONTROL
AMP AMPERE
ANN ANNUCIATOR
AS AMPERE SENSOR
ASW AMPERE SWITCH
AUX AUXILIARY
ASSY ASSEMBLY
AT AMPERE TRIP
ATS AUTOMATIC TRANSFER
SWITCH
AVI AUTOMATIC VEHICLE
IDENTIFICATION

BC BARE COPPER
BCW BARE COPPER WIRE
BAT BATTERY
BKR BREAKER

CBKR CIRCUIT BREAKER
CCD CHARGE COUPLED DEVICE
CGB CHASSIS GROUNDING BUS-BAR
CIRCUIT
CLF CURRENT LIMITING FUSE
CONDUIT ONLY
COMM COMMUNICATIONS
CONDUCTOR
CNTL CONTROL
CP CONTROL PANEL
CPT CONTROL POWER TRANSFER
C/R CONTACT RAIL
CR CONTROL RELAY
CRI COLOR RENDENING INDEX
CRS PVC COATED RIGID
STEEL CONDUIT
CONTROL STATION
CURRENT TRANSFORMER
COMPUTER TERMINAL BOARD
COPPER

DIM DIMMER
DC DIRECT CURRENT
DISC DISCONNECT
DP DISTRIBUTION PANEL
DSP DIGITAL SIGNAL PROCESSING

EMI ELECTROMAGNETIC INTERFACE
EMT ELECTRICAL METALLIC
TUBING
EPF EXPLOSION PROOF
ETM ELAPSED TIME METER

FC FRAMMING CHANNEL
FDR FEEDER
FS FLOW SWITCH
FVNR FULL VOLTAGE
NON-REVERSING

GFI GROUND FAULT INTERRUPTER
GRS GALVANIZED RIGID STEEL
GTS GROUND TEXT STATION

HID HIGH INTENSITY DISCHARGE
HOA HAND-OFF-AUTO SWITCH
HPS HIGH PRESSURE SODIUM
HV HIGH VOLTAGE

IC INTERRUPTING CAPACITY

KVA KILOVAR
KW KILOWATT

LV LOW VOLTAGE
LS LIMIT SWITCH

MAG MAGNETIC
MC CONTACTOR COIL METALLIC
CONDUIT
MDP MAIN DISTRIBUTION PANEL
MGB MAIN GROUNDING BUSS-BAR
MS MOTOR STARTER
MT EMPTY CONDUIT

NF NON FUSED
NMC NONMETALLIC CONDUIT
NP NEMPLATE

PC POWER CABLE
PCU POWER CONDITIONING UNIT
PE PHOTOELECTRIC
PEC PHOTOELECTRIC CELL
PH PHASE
POS POSITIVE
PT POTENTIAL TRANSFORMER

RES RESISTOR
RGS RIGID GALVANIZED STEEL
RPC REMOTE POWER CENTER
RSC RIGID STEEL CONDUIT

STC SUPERVISORY TERMINATION
CABINET
SV SOLENOID VALVE
SWBD SWITCHBOARD
SWGR SWITCHGEAR

TCK TIME CLOCK
TDR TIME DELAY RELAY
TGB TELECOMMUNICATIONS
GROUNDING BUSS-BAR
TH THERMOSTAT
TLK TWISTLOCK
TMGB TELCOMMUNICATIONS MAIN
GROUNDING BUSS-BAR
TMS THERMAL FIT MARKER SYSTEM
TS TUBULAR SHEET

UH UNIT HEATER

V VOLT
VM VOLT METER
VPF VAPOR PROOF
VS VOLT METER SWITCH

W WATT
WHD WATT-HOUR DEMAND METER

XFMR TRANSFORMER

MECHANICAL

ASA ACOUSTICAL SOUND
ATTENUATOR
AC AIR COMPRESSOR
ACD ACCESS DOOR
ACU AIR CONDITIONING UNIT
AF AIR FILTER/AIR FOIL
AHU AIR HANDLING UNIT
AP ACCESS PANEL
APD AIR PRESSURE DROP
ASR AUTOMATIC SPRINKLER RISER

BD BALANCING DAMPER
BDD BACK DRAFT DAMPER
BFP BACKFLOW PREVENTER
BFV BUTTERFLY VALVE

CA COMPRESSED AIR
CC COOLING COIL
CEG CEILING EXHAUST GRILLE
CG CEILING GRILLE
COND CONDENSATE
CU CONDENSING UNIT
CV CHECK VALVE
CW COLD WATER
CWR CHILLED WATER RETURN
CWS CHILLED WATER SUPPLY

DB DRY BULB
DEG DUCT EXHAUST GRILLE
DX DIRECT EXPANSION

EA EXHAUST AIR
EAD EXHAUST AIR DAMPER
EAT ENTERING AIR TEMPERATURE
EF EXHAUST FAN
EFF EFFICIENCY
ESP EXTERNAL STATIC PRESSURE
EUH ELECTRIC UNIT HEATER
EXTR EXTRACTER

FC FORWARD CURVE
FCD FLOW CONTROL DEVICE
FLA FULL LOAD AMPERES
FLX FLEXIBLE
FMN FORCE MAIN

GPM GALLONS PER MINUTE
GR GRILLE
GV GATE VALVE

HC HEATING COIL
HD HEAD
HDN HOPPER DRAIN
HP HORSEPOWER/HEAT PUMP
HSC HOSE STORAGE CABINET
HVA HOSE VALVE, ANGLE
GLOBE TYPE
HVS HOSE VALVE, STRAIGHTWAY
GATE TYPE
HWR HOT WATER RETURN
HWS HOT WATER SUPPLY

IPS IRON PIPE SIZE
IW INDUSTRIAL WASTE

LAT LEAVING AIR TEMPERATURE
LCP LOCAL CONTROL PANEL
LR LONG RADIUS

MAV MANUAL AIR VENT
MCC MOTOR CONTROL CENTER
MCP MOTOR CONTROL PANEL
MD MOTOR OPERATED DAMPER

NC NORMALLY CLOSED
NO NORMALLY OPEN

OA OUTSIDE AIR
OAD OUTSIDE AIR DAMPER

PD PUMP DISCHARGE
PDN PLANTER DRAIN
PH PHASE
PIV POST INDICATOR VALVE
PRV PRESSURE REDUCING VALVE
PS POSITION SWITCH

RA RETURN AIR
RAD RETURN AIR DAMPER
RF RETURN FAN
RH RADIANT HEATER
RL REFRIGERANT LIQUID
RS REFRIGERANT SUCTION
RV ROOF VENTILATOR

SA SUPPLY AIR
SANT SANITARY
SAR SOUND ATTENUATOR
SCAC SELF CONTAINED AIR
CONDITIONER
SCHP SELF CONTAINED HEAT PUMP
SDP SPLITTER DAMPER
SF SUPPLY FAN
SPWG STATIC PRESSURE WATER
GAUGE
SP SUMP PUMP

T&P TEMPERATURE AND
PRESSURE RELIEF VALVE
TEMP TEMPERATURE
TG TRANSFER GRILLE
THR TOTAL HEAT REJECTION
TSP TOTAL STATIC PRESSURE
TV TURNING VANE

UC UNDER CUT
UH UNIT HEATER

VB VACUUM BREAKER
VD VOLUME DAMPER
VEL VELOCITY
VTR VENT THROUGH ROOF

WST WASTE
WB WETT BULB
WCO WALL CLEAN OUT
WEG WALL EXHAUST GRILLE
WG WATER GAUGE
WH WATER HEATER
WHA WATER HAMMER ARRESTOR
WL WALL LOUVER
WSP WET STANDPIPE

REV.	DATE	DESCRIPTION	DES.	ENG.
X	XX-XX-XX	REVISION	XX	XX

DRAWN BY: A. CARLOS DATE: 03/31/2011

Nareh D. Papp
ASSISTANT DIRECTOR: STANDARDS & DESIGN

William D. Davis
DIRECTOR OF ENGINEERING AND CONSTRUCTION

SCRR ENGINEERING STANDARDS ARE INTENDED FOR SCRR APPROVED USES ONLY.
FOR NON-SCRR APPROVED USES
SCRR SHALL NOT BE RESPONSIBLE FOR THE ACCURACY OR COMPLETENESS OF
THE DATA OR INFORMATION CONTAINED HEREIN. THE SELECTION AND USE OF THESE
STANDARDS IS THE SOLE RESPONSIBILITY OF THE USER AND SHOULD NOT BE USED
WITHOUT CONSULTING A REGISTERED PROFESSIONAL ENGINEER. ALL WARRANTIES
AND REPRESENTATIONS OF ANY KIND ARE DISCLAIMED. ANYONE MAKING USE OF
THIS INFORMATION AGREES THAT IT ASSUMES ALL LIABILITY ARISING FROM SUCH
USE. NO PART OF THESE STANDARDS SHOULD BE REPRODUCED OR DISTRIBUTED IN
ANY FORM OR BY ANY MEANS WITHOUT THE PRIOR WRITTEN PERMISSION OF SCRR.
ALL RIGHTS RESERVED.



METROLINK

SOUTHERN CALIFORNIA REGIONAL RAIL AUTHORITY
ONE GATEWAY PLAZA, 12TH FLOOR, L. A., CA. 90012

ENGINEERING STANDARDS		STANDARD	1103
GENERAL ABBREVIATIONS ARCHTECTURAL & ENGINEERING		SCALE:	NTS
REVISION	SHEET	1 OF 1	
CADD FILE:	ES1103		

GENERAL

&
@
AB
ABM
ABN
ABUT
AC
AD
ADJ
AHD
ALIGN
ALT
ANSI
AOBE
APPROX
ARCH
AREA
AREMA

A/R
AS
ASCE
ASPH
ASSY
ASTM
ATR
AVE
AVM
AWWA

BAA
BB
BBR
BCR
BEG
BK
BKF
BL
BLDG
BLLBRD
BLST
BLVD
BM
BNSF
BOC
BOS
BOT
BOW
BR

C/W
CAB
CALP
CAP
CB
CEM
CF
CG
CI
CIP
CJ
CL
CLK
CLR
CMP
CMPA
CMU
COMPJT
CND
CNTR
CNTRLR
CO
COC
COL

AND
AT
AGGREGATE BASE
AIR-BLOWN MORTAR
ABANDON
ABUTMENT
ASPHALTIC CONCRETE
AREA DRAIN
ADJUSTABLE
AHEAD
ALIGNMENT
ALTERNATE
AMERICAN NATIONAL STANDARDS INSTITUTE
AS ORDERED BY ENGINEER
APPROXIMATE, APPROXIMATELY
ARCHITECTURAL
AMERICAN RAILWAY ENGINEERING ASSOCIATION
AMERICAN RAILWAY ENGINEERING & MAINTENANCE OF WAY ASSOCIATION
AS REQUIRED
AGGREGATE SUBBASE
AMERICAN SOCIETY OF CIVIL ENGINEERS
ASPHALT, ASPHALT CONCRETE PAVING
ASSEMBLY
AMERICAN SOCIETY FOR TESTING & MATERIALS
ABOVE TOP OF RAIL
AVENUE
ADD VALUE MACHINE
AMERICAN WATER WORKS ASSOCIATION

BOARDING ASSISTANCE AREA
BATTERY BOX
BEGINNING OF BRIDGE
BEGIN CURB RETURN
BEGIN, BEGINNING
BACK
BACKFILL
BASELINE
BUILDING
BILLBOARD
BALLAST
BOULEVARD
BENCHMARK
BURLINGTON NORTHERN SANTA FE RAILWAY
BOTTOM OF CURB
BOTTOM OF SLOPE
BOTTOM
BOTTOM OF WALL
BRIDGE, BLUE ROD

COMES WITH
CABINET
CORRUGATED ALUMINUM PIPE
CAPACITY
CATCH BASIN
CEMENT
CUBIC FEET
CENTER OF GRAVITY
CAST IRON
CAST IN PLACE
CONSTRUCTION JOINT
CENTERLINE
CHAIN LINK
CLEAR, CLEARANCE
CORRUGATED METAL PIPE
CORRUGATED METAL PIPE ARCH
CONCRETE MASONRY UNIT
COMPROMISE JOINT
CONDUIT
COUNTER
CONTROLLER
CLEANOUT
CENTER ON CENTER
COLUMN

COMM
COMM R/W
CONC
CONN
CONST
CONT
CONTR
COORD
COS
CP
CPUC
CRV
CSP
CT
CTC

CTR
CULV
CVD
CVR
CWR
CY

Dc
DEL
DEP
DET
DFX
DGAC
DI
DIA, Ø
DIAG
DIM
DIR
DIST
DN
DR
DRWY
DTR
DWG

(E)
E
EA
EB
EBR
ECR
EE
EF
EIC
EJ
ELEC
EL
ELEV
EMB
EMER
ENGR
EP
EQ
EQUIP
ES
ESMT
ET
ETW
EW
EX
EXC
EXP
EXT

(F)
FC
FDN
FF

COMMUNICATIONS
COMMISSION RIGHT OF WAY
CONCRETE
CONNECTION
CONSTRUCTION
CONTINUOUS
CONTRACTOR
COORDINATE
COSINE
CONTROL POINT, CLEARANCE POINT
CALIFORNIA PUBLIC UTILITIES COMMISSION
CURVE
CORRUGATED STEEL PIPE
COURT
CENTER TO CENTER, CENTRALIZED
TRAFFIC CONTROL
CENTER
CULVERT
CURVED
COVER
CONTINUOUSLY WELDED RAIL
CUBIC YARD

DEGREE OF CURVE
DELINEATORS
DEPTH
DETAIL
DIRECT FIXATION
DENSE GRADED ASPHALT CONCRETE
DROP INLET, DRAINAGE INLET
DIAMETER
DIAGONAL
DIMENSION
DIRECTION
DISTRIBUTION
DOWN
DRIVE
DRIVEWAY
DETOUR
DRAWING

EXISTING
EAST
EACH
EASTBOUND
END OF BRIDGE
END CURB RETURN
EACH END
EACH FACE
EMPLOYEE IN CHARGE
EXPANSION JOINT
ELECTRICAL
ELEVATION
ELEVATOR
EMBANKMENT
EMERGENCY
ENGINEER, ENGINEERING
EDGE OF PAVEMENT
EQUAL, EQUATION
EQUIPMENT
EDGE OF SHOULDER, ENGINEERING STANDARD
EASEMENT
END OF TRACK
EDGE OF TRAVELLED WAY
END WALL
EXISTING
EXCAVATION
EXPANSION
EXTERIOR

FUTURE
FACE OF CONCRETE
FOUNDATION
FILTER FABRIC

ABBREVIATIONS

FG
FH
FIN
FL
FLR
FOC
FR
FT
FTG
FW
FWY

GA
GALV
GCL
GM
GND
GP
GR
GSP

HB
HC
HD
HEX
HF
HH
HI
HL
HMAC
HORIZ
HP
HR
HS
HST
HT
HW
HWY
HZ

ID
I.D.
IE
IJ
IN
INSUL
INT
INV
IR

JB
JJ
JT

LACFCD

LACMTA

LAUPT
LB, LBS
LF
LG
LGT
LGTH
LH
LN
LOC
LOL
LP
LPL
LT
LTG
LVL

FINISHED GRADE
FIRE HYDRANT
FINISH, FINISHED
FLOW LINE
FLOOR
FIBER OPTIC CABLE
FRAME
FOOT, FEET
FOOTING
FIELD WELD
FREEWAY

GAUGE
GALVANIZED
GRADING CONTROL LINE
GUIDE MARKER
GROUND
GRADING PLANE
GUARDRAIL/GRADE
GALVANIZED STEEL PIPE

HOSE BIBB
HANDICAP, HANDICAPPED
HEAVY DUTY
HEXAGONAL
HEEL OF FROG, HEAD FREE RAIL
HANDHOLE
HIGH
HEEL LENGTH
HOT MIX ASPHALT CONCRETE
HORIZONTAL
HEEL PLATE, HIGH POINT
HANDRAIL
HEEL OF FROG, HIGH STRENGTH
HOLLOW STEEL TIE
HEIGHT, HIGH TENSILE, HAND THROW
HEADWALL
HIGHWAY
HERTZ

INSIDE DIAMETER
IDENTIFICATION
INVERT ELEVATION
INSULATED JOINT
INCH(ES)
INSULATION
INTERIOR
INVERT
INSIDE RADIUS

JUNCTION BOX
JOINTED RAIL
JOINT

LOS ANGELES COUNTY FLOOD CONTROL DISTRICT
LOS ANGELES COUNTY METROPOLITAN TRANSPORTATION AUTHORITY
LOS ANGELES UNION PASSENGER TERMINAL
POUND, POUNDS
LINEAL FEET
LONG
LIGHT
LENGTH
LEFT HAND
LANE
LOCATION
LAYOUT LINE
LOW POINT
LIGHT POLE
LEFT
LIGHTING
LEVEL

MAINT
MANG
MAX
M/C
MECH
MED
MEM
MET
MFG
MH
MIC
MIN
MISC
ML
MOD
MON
MOW
MP
MPH
MSL
MTL

(N)
N
N/A
NB
NEG
NEUT
NIC
NO, #
NOM
NTS

OA
OC
OCTA
OD
OHD
OP
OPNG
OPP
OTM
OZ

PB
PED
PERF
PERM
PF
PG
PGL
PH
PITO
PL
P/L
PNA
PNL
PP
PPL
PPP
PR
PROP
PS
PSI
PSM
PT
PTM
PVC
PVMT

MAINTENANCE
MANGANESE
MAXIMUM
MILL CUT
MECHANICAL
MEDIAN, MEDIUM
MEMBRANE
METAL
MANUFACTURER
MANHOLE
MICROPHONE
MINIMUM
MISCELLANEOUS
MAINLINE
MODIFIED
MONUMENT
MAINTENANCE OF WAY
MILE POST
MILES PER HOUR
MEAN SEA LEVEL
MATERIAL

NEW
NORTH
NOT APPLICABLE
NORTHBOUND
NEGATIVE
NEUTRAL
NOT IN CONTRACT
NUMBER
NOMINAL
NOT TO SCALE

OVERALL
ON CENTER
ORANGE COUNTY TRANSPORTATION AUTHORITY
OUTSIDE DIAMETER
OVERHEAD
OVERPASS
OPENING
OPPOSITE
OTHER TRACK MATERIAL
OUNCE

PULL BOX
PEDESTRIAN
PERFORATED
PERMEABLE, PERMANENT
POINT OF FROG
PAGE
PROFILE GRADE LINE
POTHOLE
POINT OF INTERSECTION OF TURNOUT
PLATE
PROPERTY LINE
PASSENGER NEEDING ASSISTANCE
PANEL
POWER POLE
PERFORMED PERMEABLE LINE
PERFORATED PLASTIC PIPE
PAIR
PROPOSED
POINT OF SWITCH
POUNDS PER SQUARE INCH
PARK BY SPACE MACHINE
POINT
PARKING TICKET MACHINE
POLYVINYL CHLORIDE
PAVEMENT

NOTES:

SEE SCRRR ES2201 AND ES2202-01 FOR HORIZONTAL AND VERTICAL ALIGNMENT ABBREVIATIONS.

DRAWN BY: <i>Nareh D. Papp</i>		HDR: <i>ASST</i>	DATE: 03/31/2011	<p>SCRRR ENGINEERING STANDARDS ARE INTENDED FOR SCRRR APPROVED USES ONLY. FOR NON-SCRRR APPROVED USES, SCRRR SHALL NOT BE RESPONSIBLE FOR THE ACCURACY OR COMPLETENESS OF THE DATA OR INFORMATION CONTAINED HEREIN. THE SELECTION AND USE OF THESE STANDARDS IS THE SOLE RESPONSIBILITY OF THE USER AND SHOULD NOT BE USED WITHOUT CONSULTING A REGISTERED PROFESSIONAL ENGINEER. ALL WARRANTIES AND REPRESENTATIONS OF ANY KIND ARE DISCLAIMED. ANYONE MAKING USE OF THIS INFORMATION AGREES THAT IT ASSUMES ALL LIABILITY ARISING FROM SUCH USE. NO PART OF THESE STANDARDS SHOULD BE REPRODUCED OR DISTRIBUTED IN ANY FORM OR BY ANY MEANS WITHOUT THE PRIOR WRITTEN PERMISSION OF SCRRR. ALL RIGHTS RESERVED.</p>	 <p>SOUTHERN CALIFORNIA REGIONAL RAIL AUTHORITY ONE GATEWAY PLAZA, 12TH FLOOR, L. A., CA. 90012</p>	ENGINEERING STANDARDS		STANDARD 1201
<p>ASSISTANT DIRECTOR: STANDARDS & DESIGN</p> <p><i>William D. Davis</i></p> <p>DIRECTOR OF ENGINEERING AND CONSTRUCTION</p>						STANDARD ABBREVIATIONS		SCALE: NONE
X	XX-XX-XX	REVISION	XX	XX			CADD FILE:	ES1201-01
REV.	DATE	DESCRIPTION	DES.	ENG.				

GENERAL

QTY QUANTITY
 (R) RELOCATED
 R RADIUS
 RBM RAIL BOUND MANGANESE
 RC REINFORCED CONCRETE
 RCP REINFORCED CONCRETE PIPE
 RCTC RIVERSIDE COUNTY TRANSPORTATION COMMISSION
 RD ROAD
 RDWY ROADWAY
 RECT RECTANGULAR
 REF REFERENCE
 REINF REINFORCED
 REL RELOCATE(D)
 REQ'D REQUIRED
 REV REVISION, REVISED
 RH RIGHT HAND
 RO ROUGH OPENING
 RP REFERENCE POINT
 RR RAILROAD
 RT RIGHT
 RTE ROUTE
 R/W RIGHT OF WAY
 S SOUTH
 SAE SOCIETY OF AUTOMOBILE ENGINEER
 SANBAG SAN BERNARDINO ASSOCIATED GOVERNMENTS
 SAV STAND ALONE VALIDATOR
 SB SOUTHBOUND
 SCHD SCHEDULE
 SCRRRA SOUTHERN CALIFORNIA REGIONAL RAIL AUTHORITY
 SD STORM DRAIN
 SDMH STORM DRAIN MANHOLE
 SDNG SIDING
 SECT SECTION
 SERV SERVICE
 SF SQUARE FEET
 SG SUBGRADE
 SHLDR SHOULDER
 SHT SHEET
 SIM SIMILAR
 SIN SINE
 SL SLOPE
 SLP A SIGNAGE/LIGHTING/PUBLIC ADDRESS
 SMC SWIVEL MOVEABLE JOINT
 S/N SERIAL NUMBER
 SPEC SPECIFICATION
 SQ SQUARE
 SS SANITARY SEWER
 SST STAINLESS STEEL
 ST STREET
 STA STATION
 STD STANDARD
 STIFF STIFFENER
 STL STEEL
 STR STRAIGHT
 STRL STRUCTURAL
 STRUCT STRUCTURE
 SW SWITCH
 SWK SIDEWALK
 SWL SOUNDWALL
 SY SQUARE YARD(S)
 SYMM SYMMETRICAL

ABBREVIATIONS

T&B TOP AND BOTTOM
 TAN TANGENT
 TBD TO BE DETERMINED
 TBR TO BE REMOVED
 TC TRACK CENTER
 TD TRENCH DRAIN
 TDS TRAIN DESTINATION SIGN
 TEL TELEPHONE
 TF TRACK FEET
 THDS THREADS
 THK THICKNESS
 TK TRACK
 TL TOE LENGTH
 TO TURNOUT
 TOC TOP OF CURB
 TOG TOP OF GRATE
 TOL TOLERANCE
 TOP TOP OF PAVEMENT
 TOS TOP OF SLOPE
 TOT TOP OF TIE
 TOW TOP OF WALL
 T/R TOP OF RAIL
 TRANS TRANSITION
 TTB TELEPHONE TERMINAL BOARD
 TVM TICKET VENDING MACHINE
 (TYP) TYPICAL
 UB UTILITY BOX
 UD UNDERDRAIN
 UG UNDERGROUND
 UON UNLESS OTHERWISE NOTED
 UP UNDERPASS
 UPRR UNION PACIFIC RAILROAD
 UR UNIFORM RISER
 UTIL UTILITY
 VAR VARIES
 VCTC VENTURA COUNTY TRANSPORTATION COMMISSION
 VERT VERTICAL
 VMB VISUAL MESSAGE BOARD
 VMS VISUAL MESSAGE SIGN
 W WEST
 W/ WITH
 W/O WITHOUT
 WB WESTBOUND
 WI WROUGHT IRON
 WP WORK POINT
 WPF WATERPROOF
 WRT WITH RESPECT TO
 WSM WELDED SPRING MANGANESE
 WT WEIGHT
 WWF WELDED WIRE FABRIC
 WWM WELDED WIRE MESH
 XING CROSSING
 XOVER CROSSOVER
 YD YARD(S)
 *20POTO RH NUMBER 20 POWER OPERATED TURNOUT - RIGHT HAND
 *10HOTO LH NUMBER 10 HAND OPERATED TURNOUT - LEFT HAND
 +/-, ± PLUS OR MINUS, APPROXIMATELY

NOTES:

SEE SCRRRA ES2201 AND ES2202-01 FOR HORIZONTAL AND VERTICAL ALIGNMENT ABBREVIATIONS.

DRAWN BY: <i>Nareh D. Papp</i>		HDR: _____		DATE: 03/31/2011	
X XX-XX-XX		REVISION		XX XX	
REV.	DATE	DESCRIPTION	DES.	ENG.	

SCRRRA ENGINEERING STANDARDS ARE INTENDED FOR SCRRRA APPROVED USES ONLY. FOR NON-SCRRRA APPROVED USES, SCRRRA SHALL NOT BE RESPONSIBLE FOR THE ACCURACY OR COMPLETENESS OF THE DATA OR INFORMATION CONTAINED HEREIN. THE SELECTION AND USE OF THESE STANDARDS IS THE SOLE RESPONSIBILITY OF THE USER AND SHOULD NOT BE USED WITHOUT CONSULTING A REGISTERED PROFESSIONAL ENGINEER. ALL WARRANTIES AND REPRESENTATIONS OF ANY KIND ARE DISCLAIMED. ANYONE MAKING USE OF THIS INFORMATION AGREES THAT IT ASSUMES ALL LIABILITY ARISING FROM SUCH USE. NO PART OF THESE STANDARDS SHOULD BE REPRODUCED OR DISTRIBUTED IN ANY FORM OR BY ANY MEANS WITHOUT THE PRIOR WRITTEN PERMISSION OF SCRRRA. ALL RIGHTS RESERVED.



METROLINK
 SOUTHERN CALIFORNIA REGIONAL RAIL AUTHORITY
 ONE GATEWAY PLAZA, 12TH FLOOR, L. A., CA. 90012

ENGINEERING STANDARDS	
STANDARD ABBREVIATIONS	

STANDARD	1201
SCALE:	NONE
REVISION SHEET	- 2 OF 4
CADD FILE:	ES1201-02

DESCRIPTION

EXISTING

PROPOSED

BILLBOARD		
BUILDING		
BUMPER		
CATCH BASIN		
NORTH ARROW		
COORDINATE	N2,800,500	
*FLASHERS		
*CROSSING GATE & FLASHERS		
CURVE NUMBER		
FLAG POLE		
FLOW		
GRID TICK		
GROUND CONTROL POINT (AERIAL)		
GUY WIRE		
HYDRANT		
HEADWALL		
FLARED END SECTION		
MANHOLE		
STORM DRAIN MANHOLE		
POWER POLE		
SANITARY SEWER MANHOLE		
STATION EQUALITY		
TELEPHONE POLE		
TELEPHONE MANHOLE		
SIGN		
TREE		
PALM TREE		
TREE LINE, SHRUBBERY		
POLE-MOUNTED LUMINAIRE		
ELECTROLIER WITH POLE		
ELECTROLIER WITHOUT POLE		
RAILROAD SIGNAL		
SIGNAL HOUSE		
RAILROAD MILEPOST		
TRAFFIC SIGNAL		
TRAFFIC SIGNAL WITH ARM ONLY		
TRAFFIC SIGNAL WITH ARM AND POLE		
TIME CLOCK		
PHOTOELECTRIC CELL		

DESCRIPTION

EXISTING

PROPOSED

POINT OF SWITCH (HAND-THROW TURNOUT)		
POINT OF SWITCH (HAND THROW TURNOUT WITH ELECTRIC LOCK)		
POINT OF SWITCH (POWER-OPERATED TURNOUT)		
SWITCH POINT DERAIL		
BI-DIRECTIONAL DERAIL		
HORIZONTAL CONTROL POINT		
HORIZONTAL AND VERTICAL CONTROL POINT		
VERTICAL CONTROL POINT		
BENCHMARK		
STAIRWAY OR RAMP FLOODLIGHT		
UTILITY METER		
TRANSFORMER		
GROUNDING ROD		
GROUND		
CCTV CAMERA		
MICROPHONE		
SPEAKER		
DUAL SPEAKER		
HANDHOLE		
CARD INTERFACE DEVICE		
DISTRIBUTION CABINET (ATTRIBUTED)		
STAND ALONE VALIDATOR		
TICKET VENDING MACHINE		
CHANGEABLE MESSAGE SIGN		
PUBLIC TELEPHONE		
COMMUNICATIONS EQUIPMENT ROOM		
COMMUNICATIONS INTERFACE CABINET		
FIBER DISTRIBUTION PANEL		
NOISE SENSING MICROPHONE (SURFACE MOUNTED)		
PULL BOX		
EQUIPMENT ROOM		
SUBSYSTEM DEVICE (TVM, VMS, OR CCTV)		
DISTRIBUTION CABINET (INTERMEDIATE CROSS-CONNECT)		
SINGLE MODE OR MULTIMODE FIBER OPTIC CABLE		
8 OHM EXTERIOR HORN SPEAKER		
SM FIBER TO COPPER MEDIA CONVERTER/SWITCH DUAL TX/RX		

DESCRIPTION

EXISTING

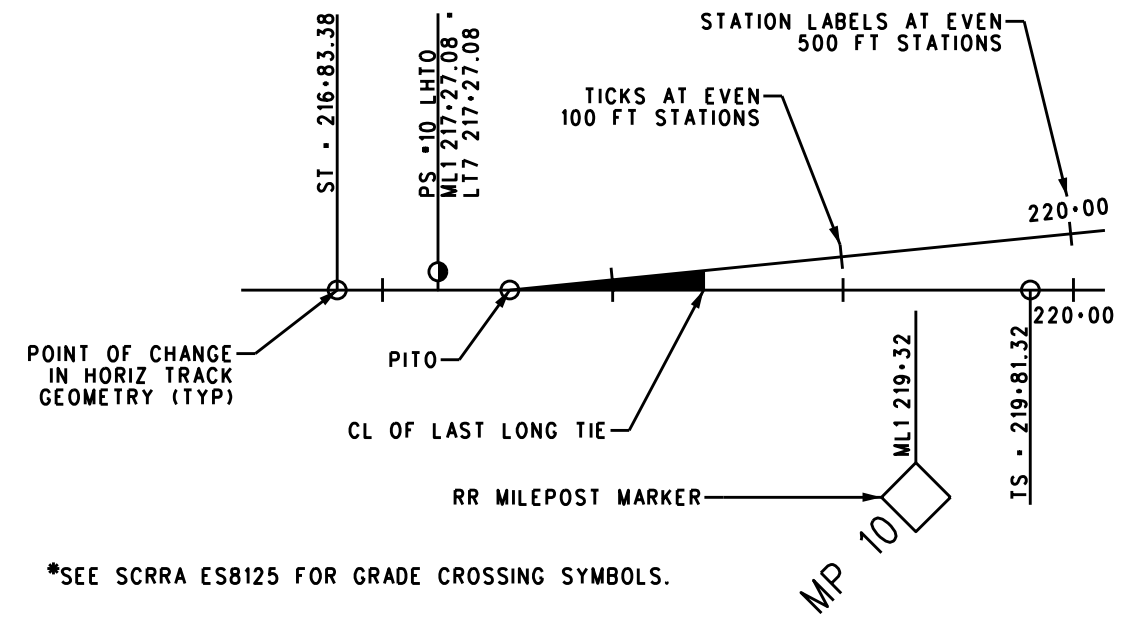
PROPOSED

BATTERY BOX		
CCTV, SECURITY MANHOLE		
TELEVISION MANHOLE		
ELECTRIC MANHOLE		
WATER VALVE BOX		
TRAFFIC CONTROL BOX		

PATTERNS

STONE/BRICK PAVING	
BALLAST	
TIMBER	
SUBGRADE, EARTH	
SUBBALLAST	
AGGREGATE BASE	
CONCRETE	
PEDESTRIAN CROSSING PANEL	
TACTILE WARNING TILES	
GRADED/LANDSCAPED AREA	
GRADE CROSSING PANELS	
HOT MIX ASPHALT CONCRETE	

TYPICAL ILLUSTRATION OF TRACK AND TURNOUT



REV.	DATE	DESCRIPTION	DES.	ENG.
X	XX-XX-XX	REVISION	XX	XX

DRAWN BY: HDR DATE: 03/31/2011
Naveh D. Papp
 ASSISTANT DIRECTOR: STANDARDS & DESIGN
William Davan
 DIRECTOR OF ENGINEERING AND CONSTRUCTION

SCRR ENGINEERING STANDARDS ARE INTENDED FOR SCRR APPROVED USES ONLY. FOR NON-SCRR APPROVED USES, SCRR SHALL NOT BE RESPONSIBLE FOR THE ACCURACY OR COMPLETENESS OF THE DATA OR INFORMATION CONTAINED HEREIN. THE SELECTION AND USE OF THESE STANDARDS IS THE SOLE RESPONSIBILITY OF THE USER AND SHOULD NOT BE USED WITHOUT CONSULTING A REGISTERED PROFESSIONAL ENGINEER. ALL WARRANTIES AND REPRESENTATIONS OF ANY KIND ARE DISCLAIMED. ANYONE MAKING USE OF THIS INFORMATION AGREES THAT IT ASSUMES ALL LIABILITY ARISING FROM SUCH USE. NO PART OF THESE STANDARDS SHOULD BE REPRODUCED OR DISTRIBUTED IN ANY FORM OR BY ANY MEANS WITHOUT THE PRIOR WRITTEN PERMISSION OF SCRR. ALL RIGHTS RESERVED.

SOUTHERN CALIFORNIA REGIONAL RAIL AUTHORITY
 ONE GATEWAY PLAZA, 12TH FLOOR, L. A., CA. 90012

ENGINEERING STANDARDS	
STANDARD SYMBOLS AND PATTERNS	

STANDARD	1201
SCALE:	NONE
REVISION SHEET	3 OF 4
CADD FILE:	ES1201-03

UTILITY
LINESYLES

UTILITY	EXISTING OVERHEAD	OVERHEAD TO BE REMOVED	PROPOSED OVERHEAD	EXISTING UNDERGROUND	UNDERGROUND TO BE REMOVED	PROPOSED UNDERGROUND
ELECTRIC POWER						
NATURAL GAS						
FUEL						
SANITARY SEWER						
STORM DRAIN						
SIGNAL						
TELEPHONE						
CABLE TV						
COMMUNICATIONS						
FIBER OPTIC CABLE (NAME OF COMPANY)						
WATER						
HOT WATER						
TRENCH DRAIN						
UNDER DRAIN						
COMPRESSED AIR						

TRACK

	EXISTING TRACK
	TRACK TO BE REMOVED
	TRACK TO BE REALIGNED
	TRACK TO BE SHIFTED
	NEW TRACK ALIGNMENT
	FUTURE TRACK ALIGNMENT

EXISTING TRACK RECONSTRUCTION

	RAIL ONLY
	TIMBER TIES ONLY
	CONCRETE TIES ONLY
	SPOT TIE ONLY
	FASTENERS ONLY
	RAIL AND PLATES
	BALLAST ONLY
	RAIL/TIMBER TIE/ BALLAST
	RAIL/CONCRETE TIE/BALLAST
	RAIL/CONCRETE TIE/BALLAST/HMAC

OTHER COMMON LINESYLES

	EXISTING FENCE
	PROPOSED FENCE
	EXISTING SCRRRA INTERTRACK FENCE/WWM
	PROPOSED SCRRRA INTERTRACK FENCE/WWM
	CENTERLINE
	RIGHT OF WAY, EASEMENT, PROPERTY LINE
	MATCH LINE
	EXISTING GUARDRAIL
	PROPOSED GUARDRAIL
	EXISTING RETAINING WALL
	PROPOSED RETAINING WALL

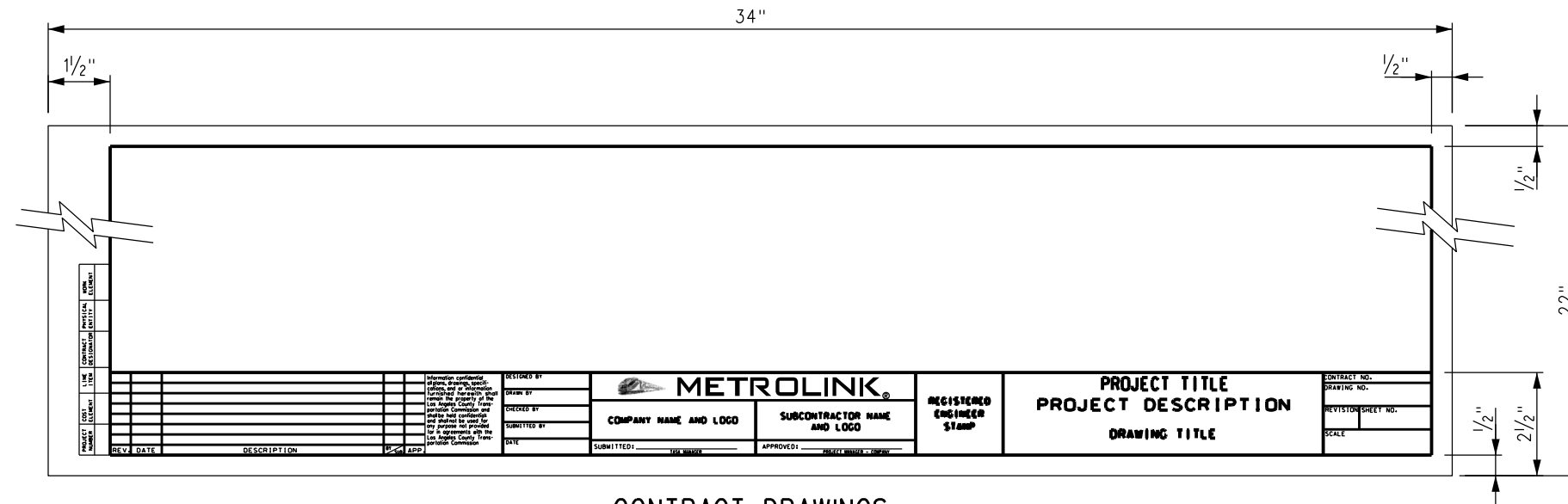
DRAWN BY: <i>Nareh D. Papp</i>		HDR: <i>William Davan</i>		DATE: 03/31/2011
ASSISTANT DIRECTOR: STANDARDS & DESIGN		DIRECTOR OF ENGINEERING AND CONSTRUCTION		
REV.	DATE	DESCRIPTION	DES.	ENG.
X	XX-XX-XX	REVISION	XX	XX

SCRRRA ENGINEERING STANDARDS ARE INTENDED FOR SCRRRA APPROVED USES ONLY. FOR NON-SCRRRA APPROVED USES, SCRRRA SHALL NOT BE RESPONSIBLE FOR THE ACCURACY OR COMPLETENESS OF THE DATA OR INFORMATION CONTAINED HEREIN. THE SELECTION AND USE OF THESE STANDARDS IS THE SOLE RESPONSIBILITY OF THE USER AND SHOULD NOT BE USED WITHOUT CONSULTING A REGISTERED PROFESSIONAL ENGINEER. ALL WARRANTIES AND REPRESENTATIONS OF ANY KIND ARE DISCLAIMED. ANYONE MAKING USE OF THIS INFORMATION AGREES THAT IT ASSUMES ALL LIABILITY ARISING FROM SUCH USE. NO PART OF THESE STANDARDS SHOULD BE REPRODUCED OR DISTRIBUTED IN ANY FORM OR BY ANY MEANS WITHOUT THE PRIOR WRITTEN PERMISSION OF SCRRRA. ALL RIGHTS RESERVED.

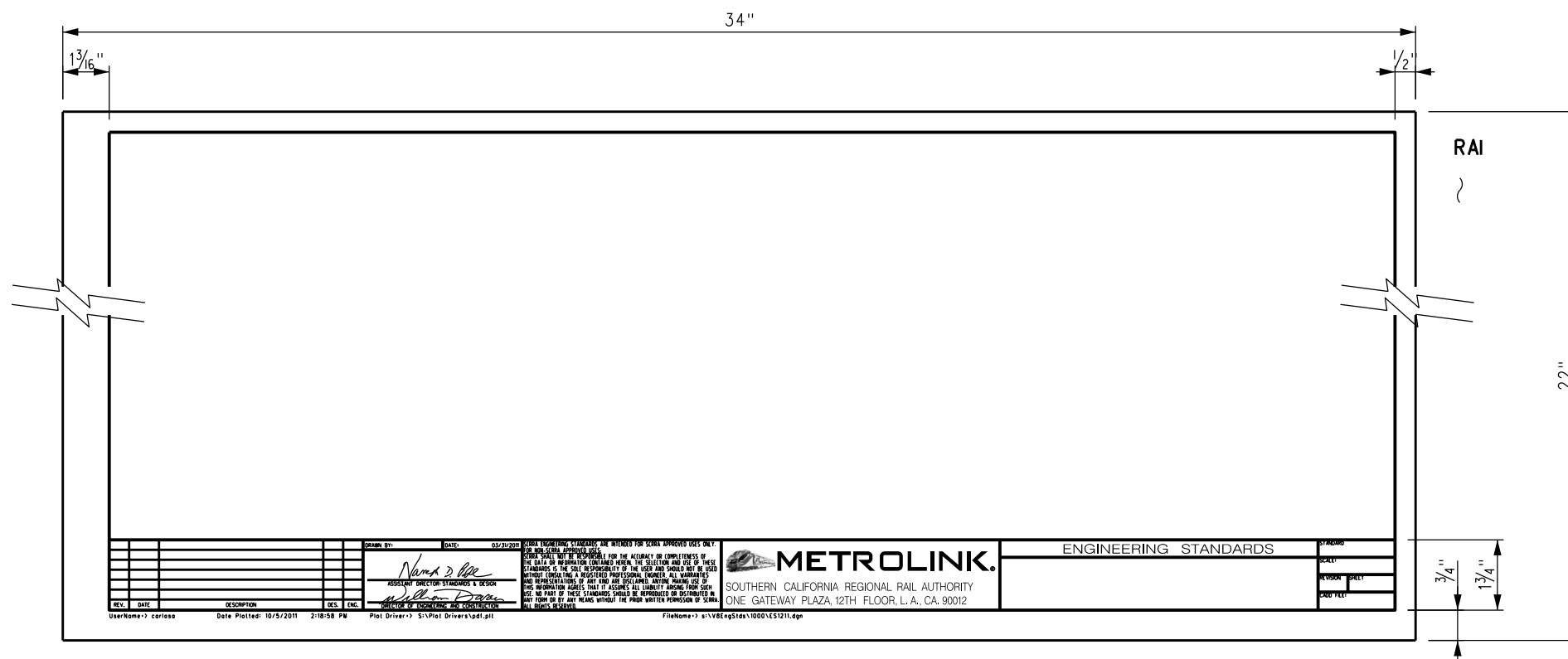
METROLINK
SOUTHERN CALIFORNIA REGIONAL RAIL AUTHORITY
ONE GATEWAY PLAZA, 12TH FLOOR, L. A., CA. 90012

ENGINEERING STANDARDS	
STANDARD LINESYLES	

STANDARD	1201
SCALE:	NONE
REVISION SHEET	4 OF 4
CADD FILE:	ES1201-04

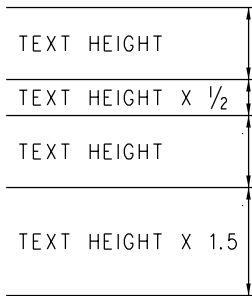
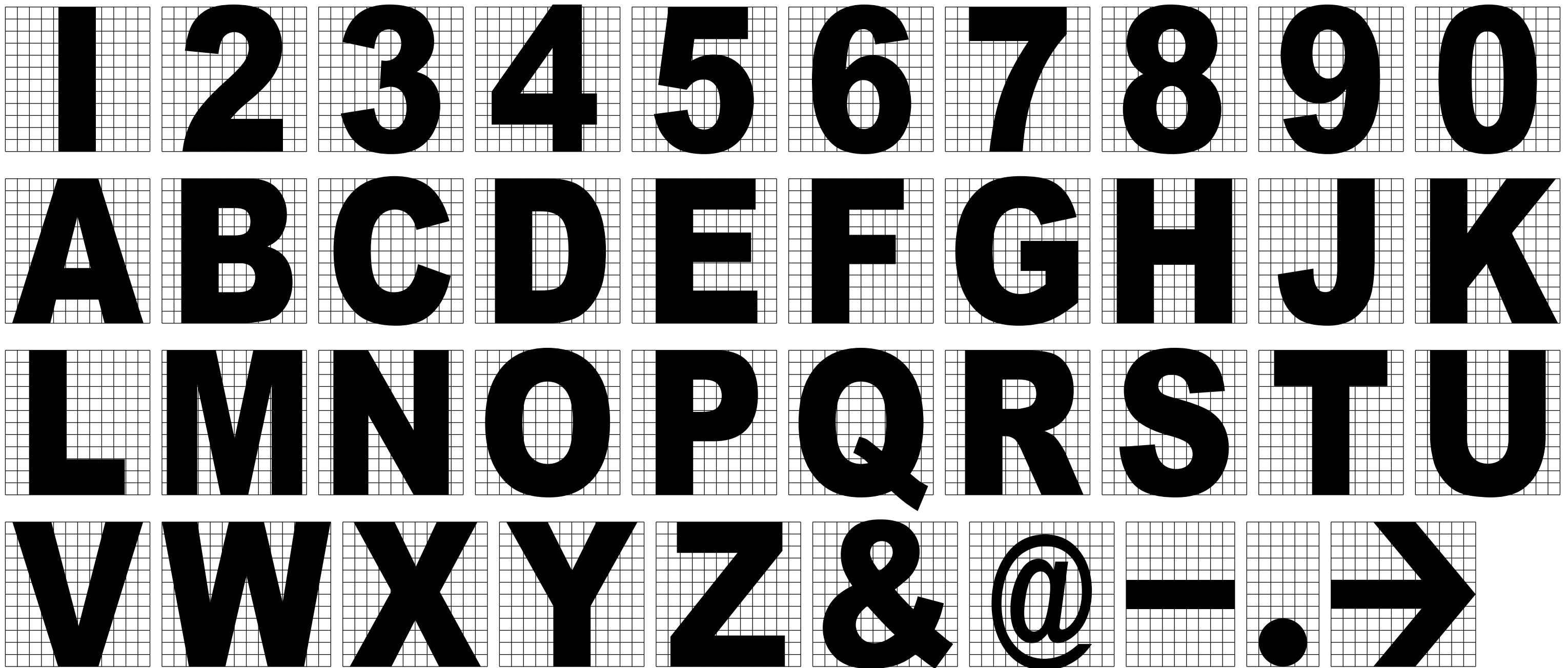


CONTRACT DRAWINGS



ENGINEERING STANDARD DRAWINGS

DRAWN BY: A. CARLOS		DATE: 03/31/2011		SCRR ENGINEERING STANDARDS ARE INTENDED FOR SCRR APPROVED USES ONLY. FOR NON-SCRR APPROVED USES, SCRR SHALL NOT BE RESPONSIBLE FOR THE ACCURACY OR COMPLETENESS OF THE DATA OR INFORMATION CONTAINED HEREIN. THE SELECTION AND USE OF THESE STANDARDS IS THE SOLE RESPONSIBILITY OF THE USER AND SHOULD NOT BE USED WITHOUT CONSULTING A REGISTERED PROFESSIONAL ENGINEER. ALL WARRANTIES AND REPRESENTATIONS OF ANY KIND ARE DISCLAIMED. ANYONE MAKING USE OF THIS INFORMATION AGREES THAT IT ASSUMES ALL LIABILITY ARISING FROM SUCH USE. NO PART OF THESE STANDARDS SHOULD BE REPRODUCED OR DISTRIBUTED IN ANY FORM OR BY ANY MEANS WITHOUT THE PRIOR WRITTEN PERMISSION OF SCRR. ALL RIGHTS RESERVED.				ENGINEERING STANDARDS		STANDARD 1211
 ASSISTANT DIRECTOR: STANDARDS & DESIGN		 DIRECTOR OF ENGINEERING AND CONSTRUCTION		SOUTHERN CALIFORNIA REGIONAL RAIL AUTHORITY ONE GATEWAY PLAZA, 12TH FLOOR, L.A., CA. 90012		STANDARD TITLE BLOCKS		SCALE: NONE	REVISION SHEET 1 OF 1	CADD FILE: ES1211
REV.	DATE	DESCRIPTION	DES.	ENG.						



**TEXT
SPACING**

UNRELATED LINE

NOTES:

1. "ARIAL BOLD" LETTERS AND NUMERALS SHALL BE USED ON ALL SIGNS UNLESS OTHERWISE SPECIFIED ON SIGN STANDARD.
2. LETTERS AND NUMERALS MAY BE MADE PROPORTIONALLY NARROWER THAN ILLUSTRATED IF NEEDED TO FIT AVAILABLE SPACE ON THE SIGN. HEIGHT SHALL NOT BE ADJUSTED.
3. ALL LETTERS AND NUMERALS SHALL BE BLACK 3M 3650-12 "SCOTCH PLUS" NON-REFLECTIVE.
4. THE LETTER "I" AND THE NUMERAL "1" ARE IDENTICAL.
5. USE TEXT SPACING PATTERN ON THIS SHEET UNLESS OTHERWISE SPECIFIED ON SIGN STANDARD.

DRAWN BY: A. CARLOS		DATE: 03/31/2011		<small>SCRR ENGINEERING STANDARDS ARE INTENDED FOR SCRR APPROVED USES ONLY. FOR NON-SCRR APPROVED USES, SCRR SHALL NOT BE RESPONSIBLE FOR THE ACCURACY OR COMPLETENESS OF THE DATA OR INFORMATION CONTAINED HEREIN. THE SELECTION AND USE OF THESE STANDARDS IS THE SOLE RESPONSIBILITY OF THE USER AND SHOULD NOT BE USED WITHOUT CONSULTING A REGISTERED PROFESSIONAL ENGINEER. ALL WARRANTIES AND REPRESENTATIONS OF ANY KIND ARE DISCLAIMED. ANYONE MAKING USE OF THIS INFORMATION AGREES THAT IT ASSUMES ALL LIABILITY ARISING FROM SUCH USE. NO PART OF THESE STANDARDS SHOULD BE REPRODUCED OR DISTRIBUTED IN ANY FORM OR BY ANY MEANS WITHOUT THE PRIOR WRITTEN PERMISSION OF SCRR. ALL RIGHTS RESERVED.</small>				ENGINEERING STANDARDS		STANDARD 1212	
				ASSISTANT DIRECTOR: STANDARDS & DESIGN DIRECTOR OF ENGINEERING AND CONSTRUCTION		SOUTHERN CALIFORNIA REGIONAL RAIL AUTHORITY ONE GATEWAY PLAZA, 12TH FLOOR, L. A., CA. 90012		LETTERING FOR SIGNS		SCALE: NONE REVISION SHEET 1 OF 1 CADD FILE: ES1212	
REV.	DATE	DESCRIPTION	DES.	ENG.							